

FIFTY YEARS AGO TODAY.

TUESDAY, JULY 20, 1847.

"The morning was frosty," wrote Orson Pratt. The advance company wended its way laboriously westward for about six miles, over mountains, through deep ravines or gulches, bolst'ring up the rocky road and cutting out small timber or underbrush. Orson Pratt wrote a description of the road and country he had traversed during the last few days and left it in a con-

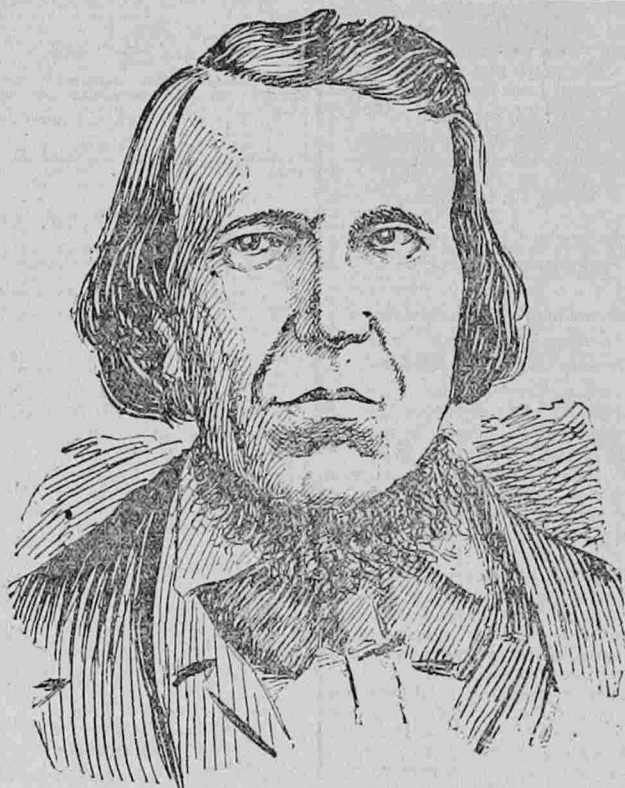
The following are the names of members of the pioneer band of whom no photographs could be obtained.

Roswell Stevens died at Bluff City, San Juan county, May 4, 1880.

Luke S. Johnson died in Salt Lake City December 9, 1861.

Edmund Ellsworth moved to Arizona, where he died a few years ago.

Sylvester H. Earl died in St. George twenty years ago.



JOHN YOUNG GREENE.

[From a daguerreotype loaned by his daughter, Mrs. Rhoda Lippman.]

spicuous place for those who were to follow in his trail. He camped that night in the mountain fastnesses at an altitude of 7245 feet.

Back in the main camp the repairs were setting tires and fixing damaged wagons, which took until nearly 11 o'clock, when the camp again started, meeting one of the Crow men from the forward camp, who was out looking for some lost cattle.

The main camp was moved forward 7 1/4 miles, crossing Canyon creek eleven times, over the same crooked, rough road.

Brigham Young's rear company, wrote Wilford Woodruff, started early on Tuesday morning, and stopped for breakfast after a five-mile drive. The pioneer leader rode in Mr. Woodruff's easy wagon, and, although still suffering from the serious attack of mountain fever, he stood the journey well. After breakfast the company traveled ten miles further and camped on Canyon creek. The distance from Winter Quarters of the three camps were as follows: Pratt's, 1041 miles; Pack's main camp, 1032 miles; Brigham Young's, 1026 miles. Pratt was losing time continually, owing to the work his men had to perform in clearing out the road. The second camp was gaining on him, by the advantage of having the road cleared, and Brigham Young's company, having light vehicles, was able to travel but half a day, and yet catch up with the others, if necessary.

John Young Greene of the pioneer camp was born in New York State, September 2, 1826, and died in Salt Lake, May 24, 1880. On this date, half a century back, he was probably with Brigham Young's camp, as he was a member of the notable ten in which the leader and his brothers traveled.

William Henrie died in Bountiful several years ago.

Simeon Howd died in Beaver county in 1862.

Seeley Owen went to Arizona and died there.

James Case died in Sanpete county in 1858.

Artemas Johnson died in Utah many years ago.

Franklin G. Losee was lost sight of in Lehi many years ago.

Horace Monroe Frink was last heard from in San Bernardino.

Seth Taft died in Salt Lake November 23, 1863.

Almon S. Williams is unknown.

Elijah Newman died in Mantt, 1873.

Francis Boggs died in Washington county, January 22, 1889.

David Grant died in Mill Creek, December 22, 1868.

Howard Egan died in Salt Lake, March 16, 1878.

William A. King died in Boston in 1862.

Hosea Cushing died in Salt Lake prior to 1864.

Robert Byard died in Ogden, 1876.

Edson Whipple was in Colonia Juarez, Chihuahua, Mexico, when last heard from.

Solomon Chamberlain died in Washington county, Utah, March 26, 1862.

Andrew Gibbons died in Arizona many years ago.

Joseph Hancock died in Payson several years ago.

Matthey Ivory was killed near Beaver in 1885.

David Powell or Powers lived in Mississippi when last heard from.

Joseph Matthews died in Arizona many years ago.

Alexander P. Chessley lived in the San Juan valley, Cal., when last heard from.

Samuel H. Marble is unknown.

Stephen H. Markham died in Spanish Fork in 1878.

Datus Ensign died in Ogden in 1870.