

UPGRADE BUILDING

Better Quality Is Association Aim

Weber County homebuilders taking part in the 1961 Home Style Show are members of the Weber Basin Homebuilders Assn. The Home Style Show, opening today in conjunction with National Home Week, will feature local home displays by the various builders who make up the association.

This organization was formed for the purpose of promoting high standards among its members and to improve conditions in the home building industry, according to its president, Mr. Everett Pierce.

"We hope also to upgrade the construction of homes through utilization of the latest methods, techniques and materials," he said. "But on the local level, we seek to represent our members and the industry in general in connection with matters affecting the financing of construction, purchasing, policies and procedures of the Fed-

eral Housing Administration and the Veterans Administration.

"The dissemination of information from governmental agencies, from inspection departments of the cities in Weber County, the Utah Housing Council as well as other boards agencies and commissions is also of importance to home building."

In meetings of the other homebuilding associations in the state, problems regarding legislation, building codes, and others peculiar to the organizations are discussed.

President Pierce says that the National Association of Homebuilders sends the organization technical data of value to the local members: giving them latest methods, of financing, marketing and construction procedures. On the national level there is an annual convention and on a regional level clinics are held to aid the homebuilders.

Other officers of the Weber Coun-

Builders Get Reactions, Expectations of Public

By Robert C. Weaver
Administrator Housing and Home Finance Agency

National Home Week is an opportunity not only for the builders to put their best homes forward for the public's viewing. It is also a chance for the builders to learn from the home-viewing public their

judgments and expectations about the homes they want now and tomorrow.

This year's Home Week has chosen an expressive theme for both the builder and the buyer—"A Better Home—A Better Life." A homeseeker judges a house not merely by the materials that go into it, but principally by the opportunities it offers for the living needs and hopes of the family.

For some this may be a luxury split-level on an acre lot with air-conditioning and a swimming pool. For most people it means a much more modest place in a decent neighborhood equipped and designed for the varied activities of a growing family.

MUST SERVE NEEDS

The builder must serve all these needs. National Home Week in every community affords him the chance not simply to show off the finest and best he can produce for those who can pay the price, but even more the full range of homes, down to the lowest price consistent with sound standards, that the industry's resourcefulness, efficiency, and planning can develop for the many of moderate means.

The National Association of Home Builders is exerting forceful leadership to extend the service of the private homebuilder to meet the needs of more people and provide better homes at lower cost.

This is important not only to the homeseeker, but also to the industry and the nation's economy.

Providing better homes for better living for more people is one of the keystones of the growth and strength of our economy, on which all of us depend. National Home Week offers a community forum for the builders to advertise what has been done and to advance what can be done this year and in the years ahead.

What's Safest Kind of Tub?

Manufacturers of plumbing fixtures have been conducting extensive tests to determine what type of bathtub offers the maximum in safety and convenience.

The result of the tests, according to the Plumbing-Heating-Cooling Information Bureau, is development of a tub with a flat bottom, lower edge, and some type of built-in seat either on the rim or at the end of the fixture.

As a precaution against slipping or falling, the industry recommends that a strong metal grab bar be installed. It should be firmly attached to the studs over the bathtub.

New Mixing Valve Seen on Showers

A single handle mixing valve is available for shower baths.

This fitting, which allows you to control the water volume and temperature with only one handle, is easy and safe to operate.

Since it makes it possible to adjust the volume and temperature quickly, says the Plumbing-Heating-Cooling Information Bureau, the single control saves water as well as fuel to heat the water.



Everett Pierce
Heads Association

ty Homebuilders Assn. are: Robert Moulding, vice president; Lou Westenskow, treasurer; and directors, Dae Coons, A. W. (Larry) Ogan, Gordon Belnap, Lee K. Hanson and Wallace Wade. Mr. Wade was president of the organization in 1960.

Light Control Can Give New Flexibility to Home

One of the new ways of decorating a home today is to do it with light.

There are luminous ceilings that can glow with noontime brilliance or be dimmed to sunset softness . . . strips of lighting concealed behind a window valance to spotlight the beauty of draperies . . . or cornice lighting to dramatize an interesting wall.

One of the new developments in lighting is the control of brilliance. By the use of a dimmer, the volume of light can be controlled much like the volume of sound is controlled on radio, record player or television.

There may be times when you want the volume of your music at its highest, and other times when you want only background music. So it is with light.

C. Eugene Stephenson, a fellow of the American Institute of Decorators, explained this use of light

control at a home lighting seminar held recently in the National Housing Center in Washington, D.C.

He said light control can give great flexibility to a home.

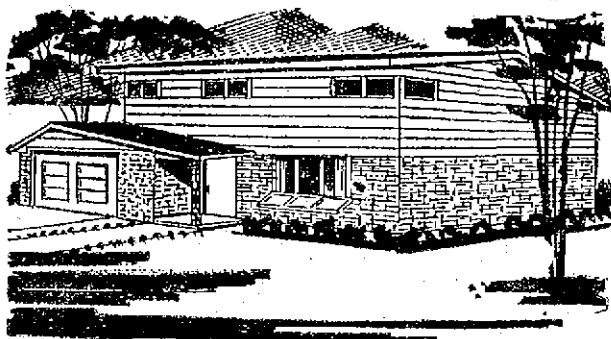
SPACIOUS OR COZY

For instance, he said, a living room can be made to look bright and spacious for a number of guests, or soft and cozy for just the family—with the control of light making the difference.

Lighting for the home, he said, falls into four classifications—area, task, perimeter and accent.

Area lighting, as the name implies, illuminates a room. Task lighting provides visibility for reading or work at a kitchen counter, a sewing machine or a desk.

Perimeter lighting may stretch the width of a room. Accent lighting is aimed at centering attention on a particular feature of a room, perhaps the artistry of a picture, beautiful textures, or an unusual wall.



ALL THE SPACE AND BUILT-IN CONVENIENCE YOU WANT

Designed to Give You More of What You're Looking For

If you buy one of our homes in the choice area of Donita Manor in Roy you will be most fortunate . . . it's a wonderful place to live.

"Custom-Built Homes of Quality"

PIERCE CONSTRUCTION CO.

Everett H. Pierce
825-7413

5469 South 2000 West
Roy, Utah

Planned Progress Has Paid Off For Us

BEN A. WILLIAMS

PAINTING AND DECORATING

Assignment With Mt. Lomond Estates

for

Wade Bros. Construction Co.

Associate
Member of
Weber Basin
Builders Assn.

2802 Jackson
Ogden
EX 4-8136